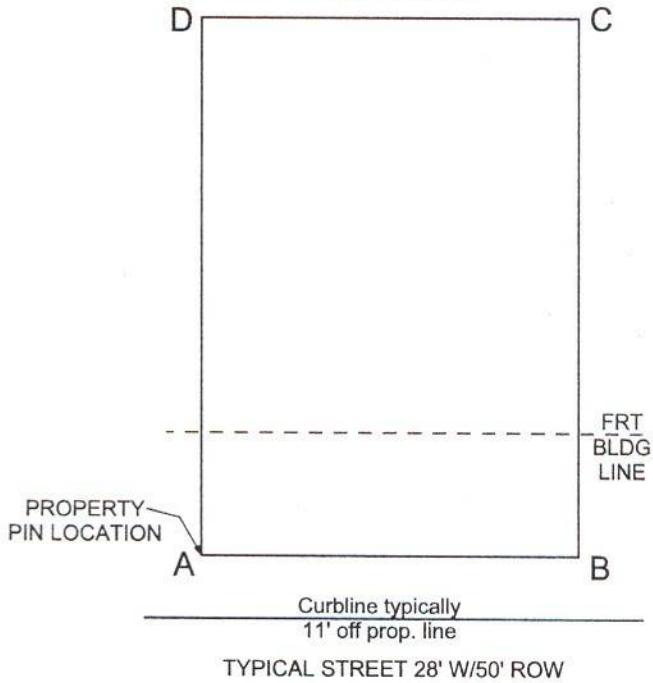
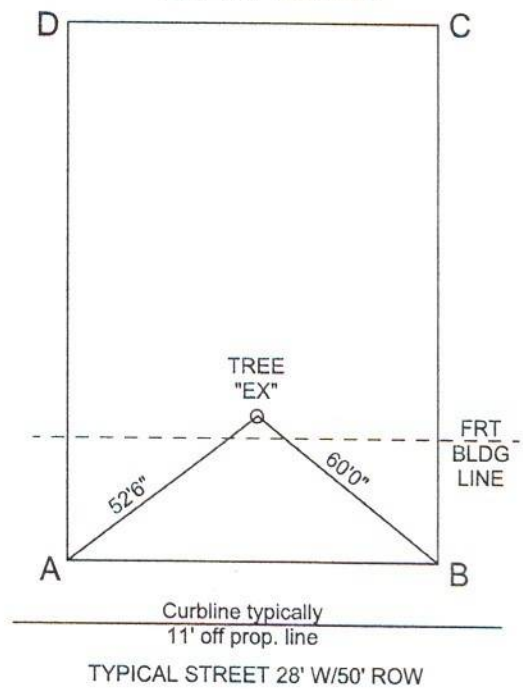


ACCURATE TREE LOCATOR

YOUR LOT



EXAMPLE LOT



| PROPERTY PIN TREE | PROPERTY PIN | | | | SIZE AND NOTES |
|----------------------|--------------|-------|---|---|------------------------|
| | A | B | C | D | |
| 1 | | | | | |
| 2 | | | | | |
| 3 | | | | | |
| 4 | | | | | |
| 5 | | | | | |
| 6 | | | | | |
| 7 | | | | | |
| 8 | | | | | |
| 9 | | | | | |
| 10 | | | | | |
| 11 | | | | | |
| 12 | | | | | |
| 13 | | | | | |
| 14 | | | | | |
| 15 | | | | | |
| EX | 52'6" | 60'0" | | | 24" D. OAK, MUST SAVE! |

NOTES: Dimensions MUST be taken from the metal property pins to the CENTER of each tree. Measure two dimensions for each tree, from the closest two pins. On a lot with more property pins, simply label them (E, F, etc.), add them to the chart, and measure to the closest two pins.

www.45plans.com

6020 w. pioneer pkwy, #101

arlington, texas 76013

817-45plans